

MARK

Mark Your Ballot

VERIFY

Verify Your Selections Are Correct

VOTE

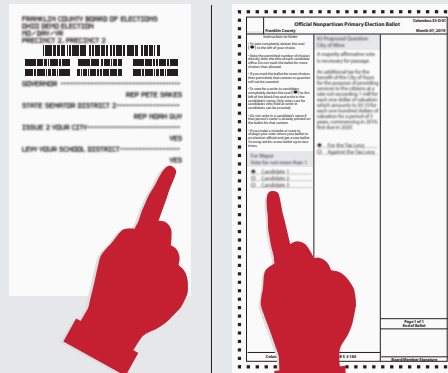
Vote by Inserting Your Ballot Into
the Ballot Counter



The new touchscreen Ballot Marker is similar to the voting machines you've used in the past, but provides the opportunity to review your printed ballot before casting your vote at the Ballot Counter.

- You can change type size and contrast to make the screen easier to read
- Affords greater voter privacy
- Greater accessibility for those with disabilities
- Enhanced set up gets you voting quickly
- On-screen review of your selections

After marking your ballot, you can review and verify it's correct - whether you vote via the touchscreen or mark your paper ballot by hand



Touchscreen
Marked Ballots

OR

Optional
Hand-Marked
Paper Ballot

After you verify your marked ballot, see the poll worker at the Ballot Counter to cast your vote. You have not finished voting until you insert your marked ballot into the Ballot Counter. Ballots that are not inserted or that leave the room **will not** be counted.

- Your ballot is deposited into a secure bin in the Ballot Counter. It is locked and secured with tamperproof seals.
- Machines have features that allow voting to continue securely and uninterrupted by power outages.



YOUR STEPS TO VOTE

1

REGISTER TO VOTE OR UPDATE REGISTRATION

Online at vote.franklincountyohio.gov
Or call 614.525.3100

**Voter Registration Deadline
for November General: 10/7/19**

2

FIND YOUR POLLING LOCATION AT:

- vote.franklincountyohio.gov/search
• 614.525.3100

3

BRING YOUR VOTER ID

Most common valid forms of ID:

- Unexpired Ohio Driver's License
- Federal or State of Ohio Photo ID
- Military ID
- Current utility bill, bank statement, government check or paycheck (original or copy) with voter's name and present address

FOR A LIST OF PHOTO AND NON-PHOTO ID'S VISIT:
vote.franklincountyohio.gov

VISIT OUR VOTING LAB AT:

1700 Morse Road
Columbus, OH 43229

Every Tuesday 10am-12pm
Every Thursday 4pm-6pm

BE A PART OF THE PROCESS!

We train & compensate you to
be a pollworker!

vote.franklincountyohio.gov
614.525.5393

OTHER WAYS TO VOTE

1

VOTE ABSENTEE BY MAIL

Get your application online at:
[vote.franklincountyohio.gov/
Absentee-Ballot-Request](http://vote.franklincountyohio.gov/Absentee-Ballot-Request)
or by calling 614.525.3470

2

VOTE IN-PERSON ABSENTEE

Early Vote Center
1700 Morse Road
Columbus, OH 43229

WEEKDAYS	OCT 8-OCT 25	8am to 5pm
WEEKDAYS	OCT 28-NOV 1	8am to 7pm
SATURDAY	NOVEMBER 2	8am to 4pm
SUNDAY	NOVEMBER 3	1pm to 5pm
MONDAY	NOVEMBER 4	8am to 2pm

To learn more about our machines and to watch a video, visit:

vote.franklincountyohio.gov